



CONSTRUCTION UPDATE

May 29th, 2020

SAFETY:

The health and safety of our staff and clients is always our top priority. CG Schmidt has taken steps to help prevent the spread of COVID-19 throughout our jobsite and the buildings we are working in. We have met with our subcontractors to inform them of the changes that we have made on site, including a 100% glove policy, mask policy (when working within six feet of other people). Hand sanitizer stations are also installed around the site for everyone's use.

WHAT YOU MAY NOTICE ON SITE IN THE NEXT WEEK:

PLE

- Continue drywall and paint in cave area

Site

- Curb and gutter layout will begin

ASA

- Begin masonry walls in administrative area

Pewaukee High School

- Begin structural component installation

PROGRESS SINCE LAST UPDATE:

PLE RENOVATION

- **Demolition** – Finished demo for Makers Space and existing Art Room
- **Fire Protection** – Continued sprinkler installation
- **Masonry** – Blocked in Makers space walls

ASA Clark Remodel

- **HVAC** – Continued installing ductwork
- **Carpeting** – Continued installing carpeting on second floor
- **Lighting** – Continued installing lighting in classrooms

INNOVATION ADDITION

- **Masonry** – Finished masonry veneer
- **HVAC** – Continued installing ductwork
- **Windows** – Finished installing 2nd floor exterior North facing windows

Pewaukee High School

- **Windows** – Finished installing exterior North facing windows
- **HVAC** – Continued installing ductwork
- **Concrete** – Poured piers in main office area
- **Demo** – Finished saw cuts for new stairwell

GOALS NEXT 2 WEEKS:

PLE

- ADDITION

- **Turnover** – Punchlist work

- RENOVATION

- **Renovation** – Complete district office remodel
- **Demolition** – Substantially complete with demo

ASA

- 6th GRADE ADDITION

- **Turnover** – Punchlist work

- INNOVATION ADDITION

- **Masonry** – Continue 2nd floor interior block
- **MEP** – Work on overhead rough-in
- **Flooring** – Finish flooring on 2nd floor corridor

Pewaukee High School

- **Elevator** – Begin elevator install
- **Drywall** – Begin drywalling on 2nd floor
- **Structural Demo** – Cut open skylight

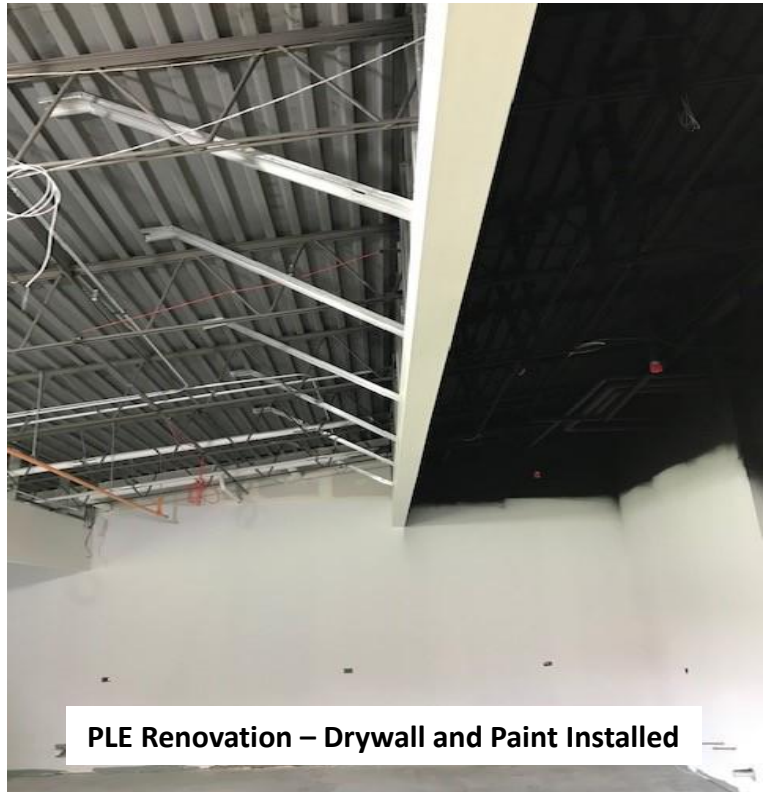
P CONSTRUCTION UPDATE

PEWAUKEE
SCHOOL DISTRICT

May 29th, 2020



PLE Renovation – Entrance Masonry



PLE Renovation – Drywall and Paint Installed



PHS Renovation – Poured Concrete Footings



PHS Renovation – Poured Concrete Piers

P CONSTRUCTION UPDATE

PEWAUKEE
SCHOOL DISTRICT

May 29th, 2020



ASA Addition – Finished Installing Brick Veneer



ASA Remodel – 2nd Floor Classroom Finishes



ASA Addition – Finished Pouring Sidewalk



ASA Innovations – HVAC Install For Learning Commons Area